



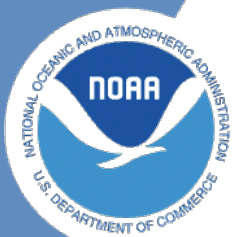
NOAA Technical Memorandum NMFS-XXX-##

# Gulf Ecosystem Status Report

Gulf of America Integrated Ecosystem Assessment Program

2025-12-13

U.S. DEPARTMENT OF COMMERCE  
National Oceanic and Atmospheric  
Administration  
National Marine Fisheries Service  
Northwest Fisheries Science Center



**NOAA  
FISHERIES**

# **Gulf Ecosystem Status Report**

Gulf of America Integrated Ecosystem  
Assessment Program<sup>1</sup>

1. NOAA Fisheries, Southeast Fisheries Science Center

# Table of contents

<b>1</b>	<b>Introduction</b>	<b>1</b>
1.1	About this report . . . . .	1
1.2	Indicator selection . . . . .	2
1.3	Notes on interpreting time series figures . . . . .	2
<b>2</b>	<b>Tracking performance toward fishery management objectives</b>	<b>5</b>
<b>3</b>	<b>Risks to meeting fishery management objectives</b>	<b>6</b>
<b>4</b>	<b>Integrated ecosystem perspectives</b>	<b>7</b>
	. . . . .	7
<b>5</b>	<b>Research recommendations</b>	<b>8</b>
<b>6</b>	<b>Acknowledgments</b>	<b>9</b>
6.1	Contributions . . . . .	9
6.2	Resources . . . . .	9
<b>7</b>	<b>Contributors</b>	<b>10</b>
7.1	<b>Editors</b> . . . . .	10
7.2	<b>Contributors</b> . . . . .	10
	<b>References</b>	<b>11</b>

## List of Figures

1.1	Process for selecting indicators for the U.S. Caribbean Ecosystem Status Report. . . . .	3
1.2	Example time series plot, showing an indicator plotted with its mean and standard deviation, and trend analysis for the most recent five years of data. See text for a more detailed description of specific calculations. .	4

# 1 Introduction

**i** Editing this template page

Template text is pulled from the 2025 Caribbean Ecosystem Status Report. Adjust accordingly.

## 1.1 About this report

The purpose of this report is to synthesize diverse information sources to assist with implementation of ecosystem-based fisheries management in the U.S. Caribbean region, which includes Puerto Rico and the U.S. Virgin Islands (USVI). A suite of indicators that span physical, biological, social and economic elements of the ecosystem are reported with the goal of helping the Caribbean Fishery Management Council (CFMC) and other resource managers measure progress toward fishery management objectives. The report relies on both previously identified proposed indicators and expert vetting to select a suite of indicators that best address the fishery management plan (FMP) objectives for the U.S. Caribbean. Information in this report is organized into two sections: 1) tracking performance toward predefined fishery management objectives, and 2) potential risks to meeting those fishery management objectives.

The first set of indicators can be used to consider progress toward stated management objectives. Management objectives were gleaned from the Island-based Fishery Management Plans and categorized into seven groups: food production, socioeconomic health, equity, engagement and participation, bycatch reduction, governance, and protection of ecosystems. Each of these sections contains a selection of indicators that can be used to better understand how well these respective management objectives are being met. Note that for some indicators, directionality can be associated with positive or negative progress toward management objectives (e.g., increases in abundance of economically important species is generally associated with improved management). However for other indicators, directionality can be considered neutral (e.g., proportion of diving trips, changes in contribution to revenue), although changes in these indicators represent important shifts in the fishing dynamics of which managers

## 1 Introduction

should be aware. The risk indicator section quantifies major stressors (as identified by stakeholders) that capture the potential risks to meeting fishery management objectives. These indicators provide managers with an understanding of the backdrop against which management is occurring. Major changes in these indicators may be associated with decreased effectiveness of fisheries management, if the influences of external environmental or economic stressors are strong relative to influences from adjustments in fishing activity.

This report was created in Quarto (<https://github.com/quarto-dev/quarto-cli/>) using the NOAA Quarto book template (<https://github.com/nmfs-opensci/NOAA-quarto-book>). A github repository houses all the indicator data and R code used to compile the report (<https://github.com/Gulf-IEA/Caribbean-ESR-2>).

### 1.2 Indicator selection

The CFMC's Science and Statistical Committee, as well as the region's Ecosystem-Based Fishery Management Technical Advisory Panel (EBFM TAP), recently completed a series of conceptual models linking key components of the ecosystem and human activities related to fishing (Seara et al. 2024). This report used these conceptual models as a starting list of proposed indicators and matched the indicators to address progress toward FMP objectives when possible (Figure 1.1).

For those objectives that did not have an immediate conceptual model-identified indicator, a decision matrix process was used for expert vetting (Montenero, Kelble, and Broughton 2021). This decision matrix was composed of a list of proposed indicators compiled from the conceptual models as well as proposed indicators provided via expert input. These potential indicators were vetted and edited by expert small working groups, who then scored a decision matrix of potential indicators against the following decision criteria: long term data availability, measurability, sensitivity to environmental changes, specificity, spatial and temporal scalability, relevance to specific FMP objectives, and responsiveness to management actions.

### 1.3 Notes on interpreting time series figures

Time series data are plotted in a standardized format for ease of interpretation (e.g., Figure 1.2). The x-axis represents the temporal dimension, which may be monthly, yearly, or irregular time steps, and the y-axis represents the indicator value in units specified in the axis label. Measures of uncertainty in the indicator values are also

## Process for Caribbean ESR

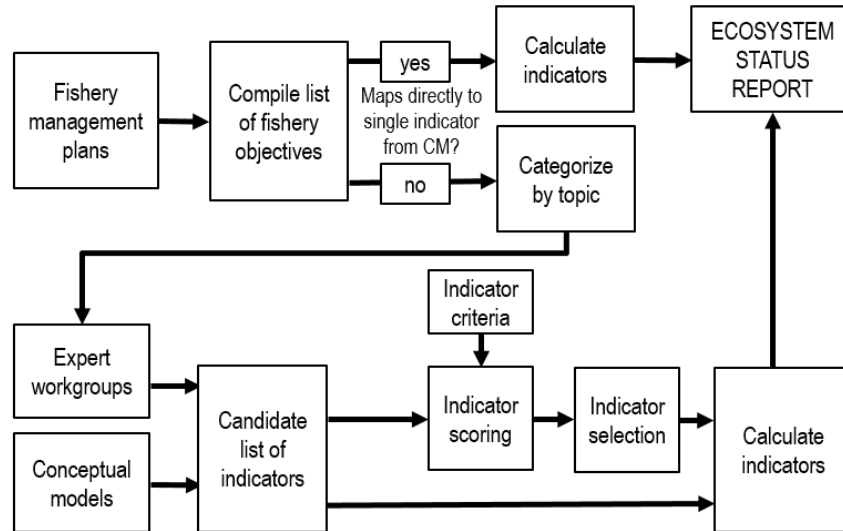


Figure 1.1: Process for selecting indicators for the U.S. Caribbean Ecosystem Status Report.

shown, when available. The dashed horizontal line represents the mean indicator value across the entire time series, and the solid horizontal lines denote the mean plus or minus one standard deviation. Red shaded areas and green shaded areas show years for which the indicator value is below or above one standard deviation from the mean, respectively. The blue vertical shaded box highlights the last five years of indicator values, over which additional metrics are calculated. Black circles to the right of each figure indicate whether the indicator values over the last five years are greater (plus sign), less than (minus sign), or within (solid circle) one standard deviation from the mean of the overall time series. Arrows to the right of each figure indicate whether the least squares linear fit through the last five years of data produces a positive or negative slope that is greater than one standard deviation (upward or downward arrows respectively), or less than one standard deviation (left-right arrow).

## 1 Introduction

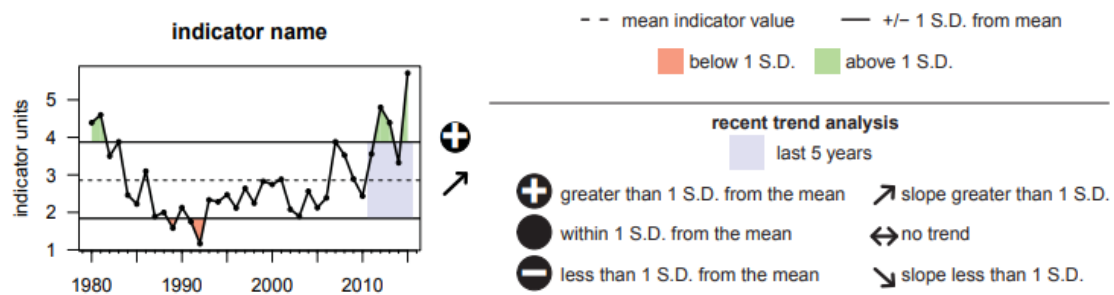



Figure 1.2: Example time series plot, showing an indicator plotted with its mean and standard deviation, and trend analysis for the most recent five years of data. See text for a more detailed description of specific calculations.




## 2 Tracking performance toward fishery management objectives

 Editing this template page

Template text is pulled from the 2025 Caribbean Ecosystem Status Report. Adjust accordingly.

In this section, we report indicators that are intended to capture progress towards meeting Fishery Management Plan objectives related to food production, socioeconomic health, equity, engagement and participation, bycatch reduction, governance and protection of ecosystems.

### 3 Risks to meeting fishery management objectives

 Editing this template page

Template text is pulled from the 2025 Caribbean Ecosystem Status Report. Adjust accordingly.

In this section, we report indicators that capture identified risks to the ecosystem that could impact the ability to meet Fishery Management Plan objectives. Unless otherwise specified, physical indicators reported for the U.S. Caribbean region were calculated over a bounding box with limits of longitude 68 degrees W to 64.5 degrees W and latitude 17.5 degrees N to 18.75 degrees N.

## **4 Integrated ecosystem perspectives**

Synthesis

## **5 Research recommendations**

Recommendations

## **6 Acknowledgments**

### **6.1 Contributions**

This report would like to acknowledge the efforts and contributions of:

### **6.2 Resources**

This repo and GitHub Action associated with generating this report was based on the Openscapes tutorial `quarto-website-tutorial` by Julia Lowndes and Stefanie Butland.

## **7 Contributors**

### **7.1 Editors**

xxx

### **7.2 Contributors**

xxx

## References

- Montenero, Kelly, Chris Kelble, and Kathy Broughton. 2021. "A Quantitative and Qualitative Decision-Making Process for Selecting Indicators to Track Ecosystem Condition." *Marine Policy* 129: 104489. <https://doi.org/https://doi.org/10.1016/j.marpol.2021.104489>.
- Seara, Tarsila, Stacey M. Williams, Kiara Acevedo, Graciela Garcia-Molliner, Orian Tzadik, Michelle Duval, and Juan J. Cruz-Motta. 2024. "Development and Analyses of Stakeholder Driven Conceptual Models to Support the Implementation of Ecosystem-Based Fisheries Management in the U.S. Caribbean." *PLOS ONE* 19 (5): e0304101. <https://doi.org/10.1371/journal.pone.0304101>.